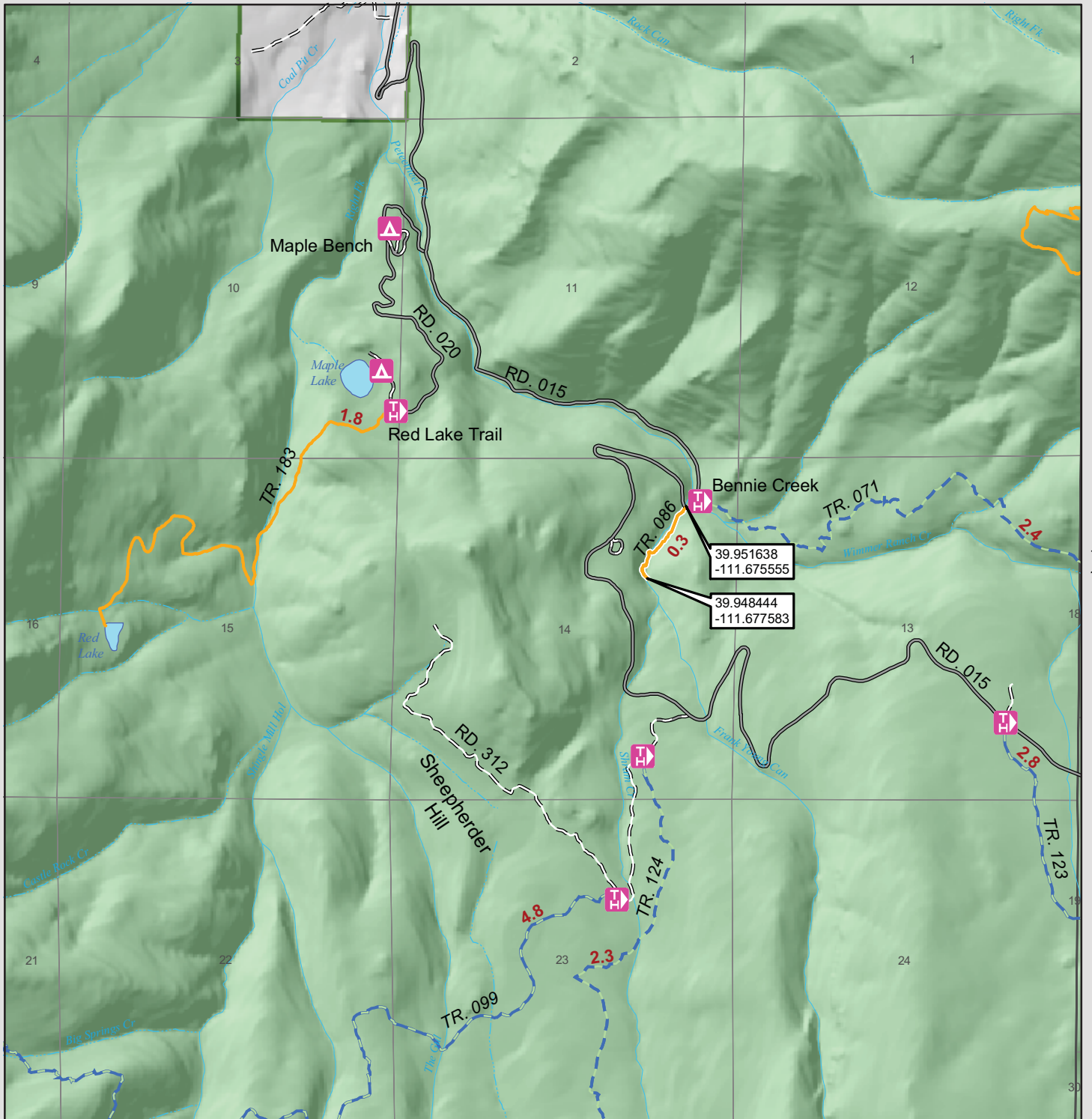


R. 2E



T. 10 S

Uinta National Forest Trail System



Grotto

Trail number : 086
 Length : 0.3 Miles



red numbers = approx. length in miles between intersections
 latitude/longitude - datum WGS 84



Original data was compiled from multiple source data and may not meet the U.S. National Mapping Accuracy Standard of the Office of Management and Budget. For specific data source dates and/or additional digital information contact the Forest Supervisor, Uinta National Forest, Provo, Utah. This map has no warranties to its content or accuracy.

cb: fw 1/4/05

Ownership

- Uinta National Forest
- National Park Service
- Private
- State

Permitted Uses on Trails

- Trail (foot, pack, bicycle, or as signed)
- Trail (foot, pack)
- ATV Trail
- Single Track Trail (motorcycle OK)

Roads

- Highway
- Other Paved Road
- Passenger Car - Gravel
- Passenger Car - Dirt
- Not Suitable for Passenger Car
- ATV's Permitted
- Motorbikes Permitted

- ▲ Campground
- ⛺ Picnic Area
- H Trailhead